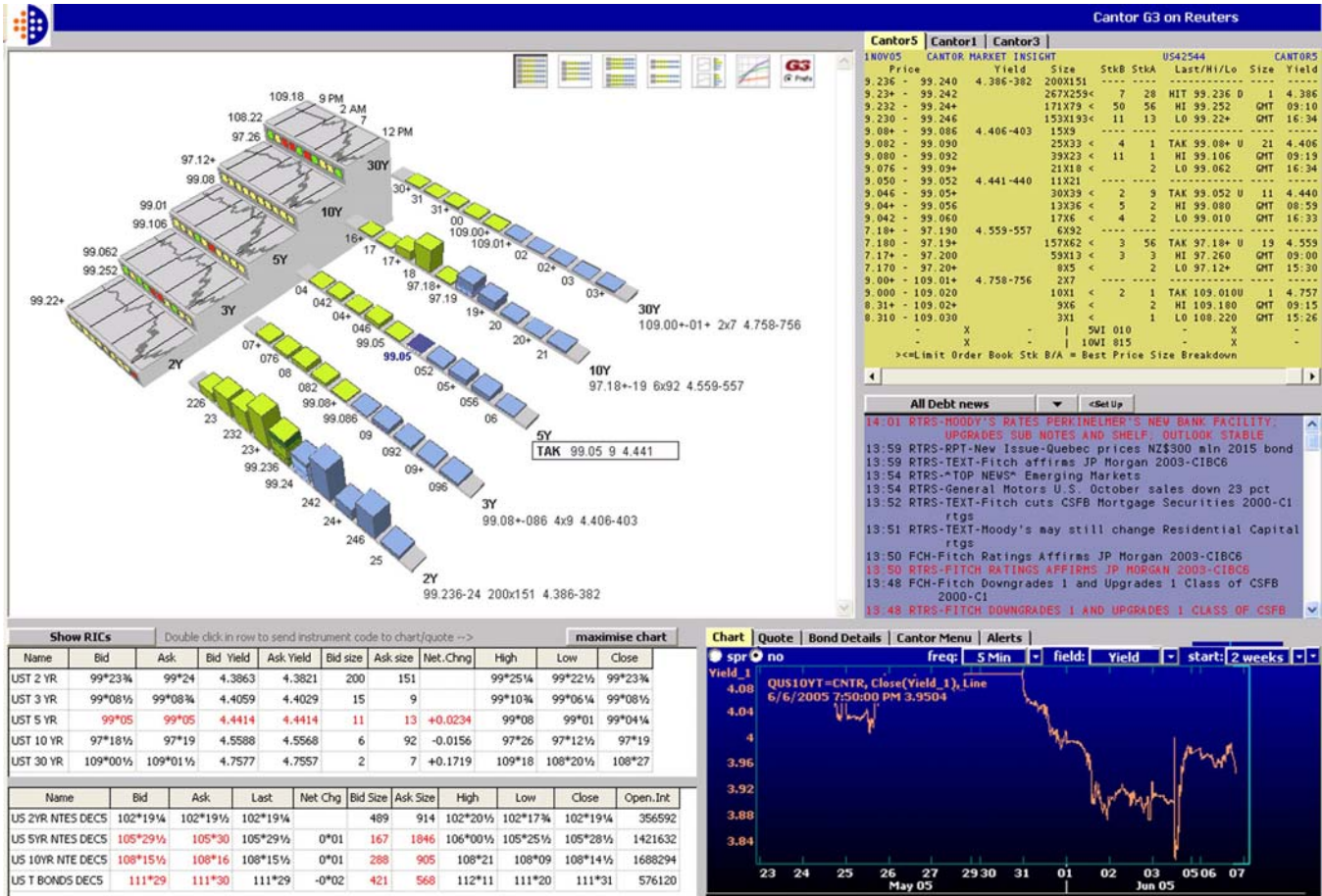


BGCantor G3 in Reuters' Kobra Setup Procedure

BGCantor G3 can be viewed within Reuters' Kobra application. The critical advantage of using BGCantor G3 embedded within Reuters is the integration of all BGCantor Market Data products in its traditional page format. Clients will no longer need to have an internet browser window open to view BGCantor G3 and switch between applications.



1 Requirements

In order to view BGCantor G3 embedded in Reuters' Kobra application a user needs to obtain username and password for BGCantor G3. Permissioning for other BGCantor Market Data US Treasuries product is required.

2 Instructions to "BGCantor Pages and BGCantor G3" .kof file

If opening the file from email:

- Open Kobra application
- Double click the .kof file attached to an email

If opening a saved file:

- Open Kobra application
- Open the .kof file by clicking File and selecting Open; browse to the location the file is saved

You will be prompted to enter your BGCantor G3 username and password. (You will only be asked for this when opening the file for the first time.)

3 Instructions to add BGCantor G3 to existing .kof file

You may add **BGCantor G3** to an existing .kof file following the instructions below.

- Open your kof file in Reuters' Kobra application
- Open a new browser in Reuters' Kobra application by going to File and selecting New
- Double-click inside the window to insert an Object and select Internet Explorer
- Go to the command line (the white box at the top next to Search icon where you would insert a RIC in a Quote screen) and paste the following link:

<http://www.cantorg3.com/g3reuters>

- Press Enter

You will be prompted to sign in to **BGCantor G3**. You will only need to login when first opening **BGCantor G3**.

NOTE: The elements of **BGCantor G3** will be resized automatically when the window size is adjusted.

4 Requirements

To see requirements for running **BGCantor G3** see Section 3 of BGCantor G3 User Guide.

5 Contact Information

Please call our Help Desk if you experience any problem with the application:

212-610-2300